



MATCHED TECHNOLOGY SYSTEM™

The GERBER EDGE FX is part of Gerber's Matched Technology System. Inclusion into this system assures users that the printer and its foils and substrates have been optimized for use with Gerber's software, plotters, and routers and have undergone accuracy, reliability, bonding, and durability performance tests. With Gerber products and the Matched Technology System, there are no surprises, just cost-effective, top-quality results.



EXCEPTIONAL COLOR AND
MATERIAL RANGE
EXCEPTIONAL RELIABILITY

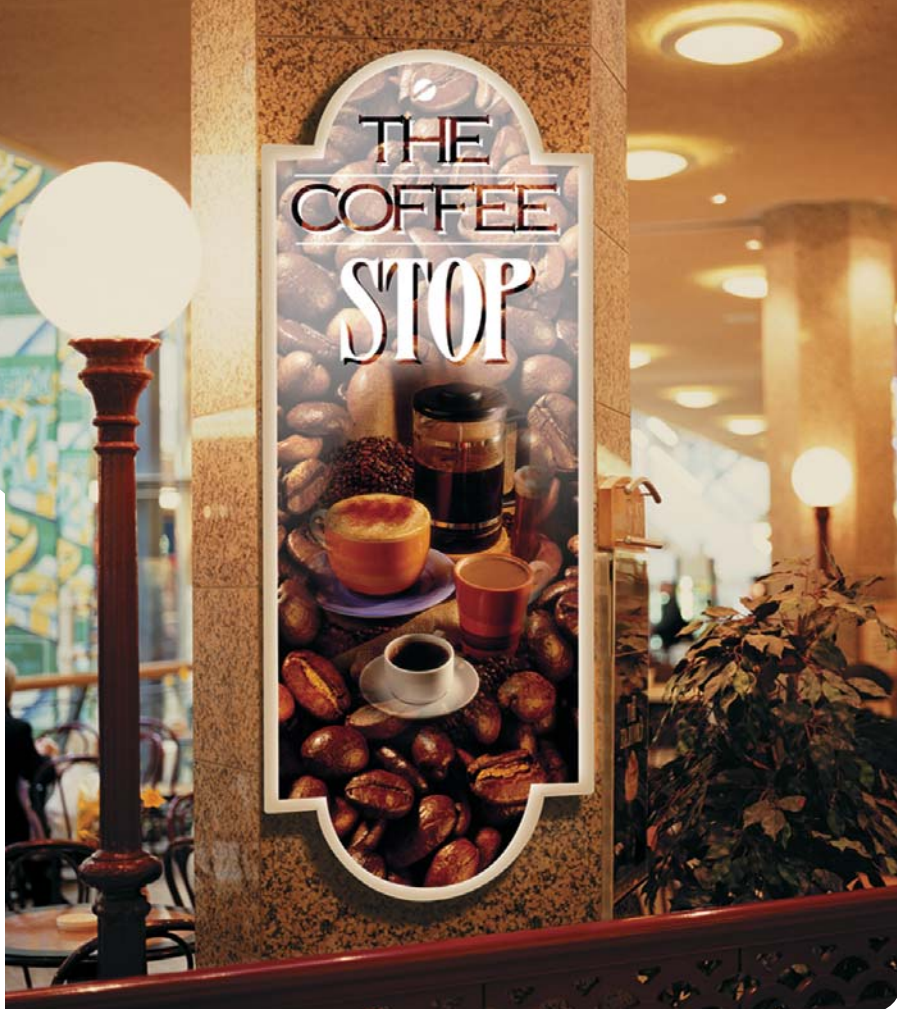
YOU CAN RELY ON EXPERTISE AND SUPPORT FROM GERBER SERVICE AND OUR SELECTED DISTRIBUTION NETWORK.

Gerber provides service to help you use the GERBER EDGE FX to its full potential. Our specialists are available around the world to respond quickly when you need:

- **Pre-installation planning**
- **Fast installation**
- **Expert service**
- **Technical support**
- **Training**
- **Preventative maintenance**
- **Quality parts**

You can choose the level of service you require, from telephone support to full service. This flexibility ensures that you get what you need to maximize uptime and improve profitability.

ADDS CAPACITY TO AN EXISTING SHOP



ABOUT GERBER SCIENTIFIC PRODUCTS

Since 1980 Gerber Scientific Products has supplied the sign making and specialty graphics industry with products and services that have revolutionized the way the world creates signs and other related visual media. We are the world leader in the development and manufacturing of computerized sign making and specialty graphics systems, software, materials, and accessories. Our proven start-to-finish digital design, printing, and production products are carefully integrated to provide graphics professionals with comprehensive engineered solutions for every digital color printing and dimensional signage need.

And our development efforts are an ongoing process. We believe the basis for innovation is listening—then applying our creative minds, innovative engineering, and outstanding workmanship to meet real world needs. And we've paid attention. The "Voice of the Customer"™ convinced us to embrace one of our industry-icon products and transform it to a next generation thermal transfer printer. So we identified a list of requirements, and in the end, we created EDGE FX, a simple, smart, affordable printer that performs job after job for all types of sign makers worldwide.

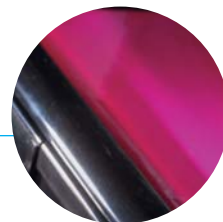
INNOVATION FIRST

The first choice of graphics professionals with an eye for creativity and a head for business. Innovative, dependable systems, completely integrated for specialty graphics and sign design and production.

- Software**
- Printers**
- Plotters**
- Routers**
- Materials & Supplies**
- Gerber Service**

 **GERBER SCIENTIFIC PRODUCTS**

A Gerber Scientific Company



 **GERBER SCIENTIFIC PRODUCTS**

A Gerber Scientific Company

83 Gerber Road
South Windsor, Connecticut 06074 USA

Telephone
860.643.1515
800.222.7446

www.gspinc.com



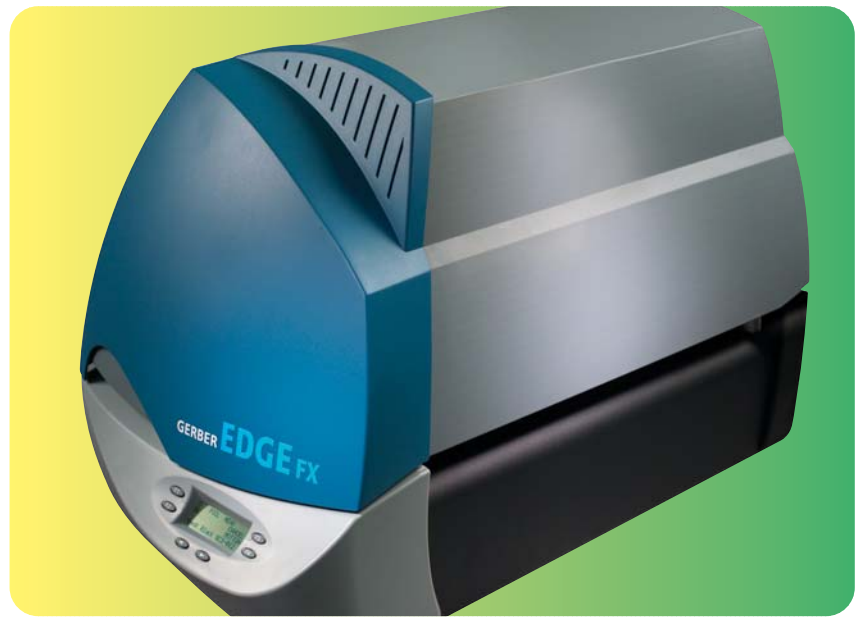
GERBER
EDGE FX™



THERMAL TRANSFER PRINTER



GERBER EDGE FX



THE POSSIBILITIES ARE ENDLESS



The GERBER EDGE FX is a digital printing solution that is ideal for any business which creates outdoor signage, indoor displays, and other specialty graphics. EDGE FX's exceptional color and material range provides unsurpassed versatility, accommodating a wide range of applications in a single, affordable printing and contour cutting system. The GerberColor™ FX foil line features Spot, Process, Transparent, Medal, L.T. Heat Transfer, Finishing, and Special Effects Series, enabling unique effects and a wide gamut for color matching. The full selection of EDGE READY™ Materials includes cast and calendered vinyls in addition to a breadth of specialty materials such as magnetic, reflective, metallic colors, heat transfer, label stock, and much more. The EDGE FX is ideal for any business that creates visual signage including screen printers, sign companies, exhibit houses, trophy shops, fleet graphics artists, museums, and ad specialty sellers. And with applications as diverse as their businesses—EDGE FX is perfect for:

SCREEN PRINTERS	SIGN SHOPS	EXHIBIT HOUSES	FLEET GRAPHICS ARTISTS	AD SPECIALTY SELLERS
<ul style="list-style-type: none"> Prototypes Repeats Resizing Decals Labels Sequential Numbering Screen Film Positives In-House Custom <li style="padding-left: 20px;">Die Cutting Customized Output Variable Data 	<ul style="list-style-type: none"> Dimensional Signs Menu Boards Magnetic Signs Banners ID Signs Directional Signs & Maps Real Estate Signs Window Graphics 	<ul style="list-style-type: none"> Booth Headers Tradeshow Graphics Banners Promotional Items 	<ul style="list-style-type: none"> Car & Truck Service Vehicles Taxis & Buses Boat Lettering Vehicle Window Emergency Vehicle Reflective 	<ul style="list-style-type: none"> OSHA Approved Signs Banners Reflective Signs Temporary Signs Lexan®-Based Control Panels using Gerber's LexEdge™ materials Trophy & Award Plaques Floor Graphics POP Displays Window Signs Helmet Graphics Short Run T-shirts



FEATURES AND BENEFITS

FEATURES	BENEFITS
Thermal transfer printing technology	<ul style="list-style-type: none"> • Exceptional outdoor durability without lamination in most applications • High abrasion resistance • Prints on the widest range of substrates • Outstanding color range and expanded application capabilities via seven specialized foil series, including spot, process, white metallics, and other specialty foils • Shop-friendly: low maintenance, no odor, no ventilation, no drying, no mess • Increase productivity on labor intense jobs • Create new opportunities with photos, fades, shadows, and other special effects
GerberColor SpectraTone™ Color Matching System	<ul style="list-style-type: none"> • Creates over 3,000 pure, vibrant colors • Create OMEGA™-generated simulations of solid Pantone® Colors • Easy, consistent color matching without special tools or techniques
Advanced GerberColor FX Foil System	<ul style="list-style-type: none"> • Sharp, clean print quality on a consistent basis • Enhanced workflow via Smart GerberGauge™ RFID technology • Lower cost of output via refillable GerberColor foil caddies and multiple GerberColor foil insert lengths
Unique EDGE READY Materials	<ul style="list-style-type: none"> • Endless applications via over 30 different material types • Handle diverse customer needs with cast and calendered vinyls, reflective, magnetic, Lexan®, static cling, and much more
Optimized design for ease of use	<ul style="list-style-type: none"> • Quick start up and shut down • Low maintenance requirements • Limited training required • Minimal GerberColor foil loading and unloading time
Compact, small footprint	<ul style="list-style-type: none"> • Requires limited shop space • Adds capacity to an existing shop
Total print and cut solution (with the addition of an FX-compatible Gerber plotter)	<ul style="list-style-type: none"> • Excellent feed and registration accuracy • Predictable output from start to completion
Robust design / Made in the U.S.A.	<ul style="list-style-type: none"> • Exceptional reliability, proven with over 10,000 EDGE® units in operation • Local, experienced service and support resources

Pantone is a registered trademark of Pantone, Inc.

Lexan is a registered trademark of GE Plastics Corporation.

